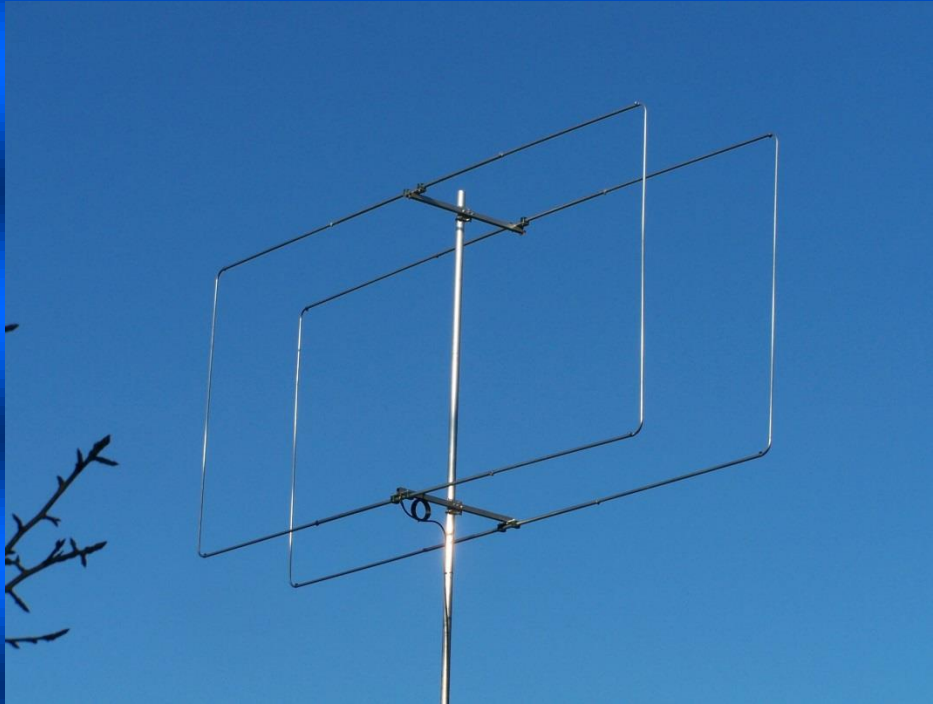


2el SUPER QUAD

Designed by: www.hpsd.nl 1.01 jan 2013

For: Dx portion 11 meter band
Antenna Type: 2el Super Quad (oblong)
Designed by: HPSD version 1.01 Jan 2013

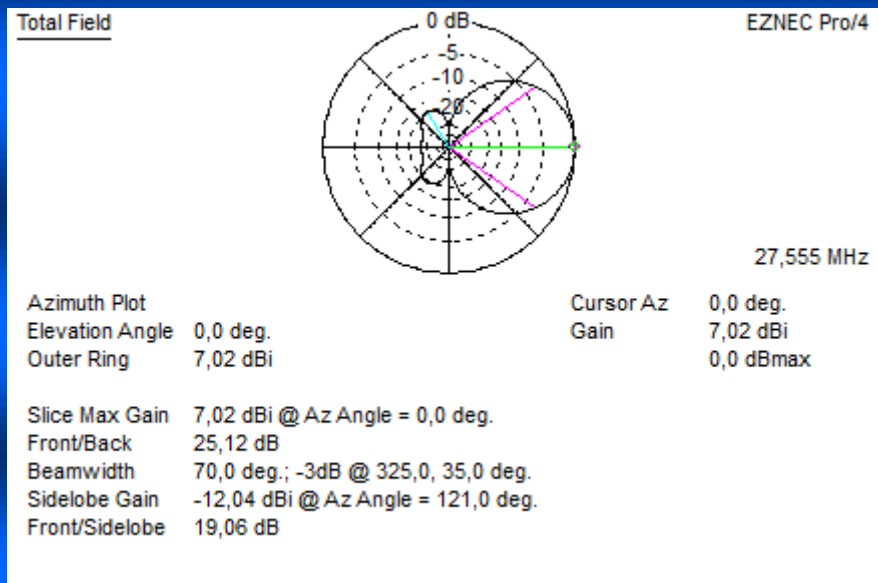


Boom length: 0,82 Meter
Gain: 7,06 dBI (5,02 dBD)
Front to Back: < 25 dB
Impedance: 50 ohms (split element) direct fed.
SWR below 2:1 ± 800 KHz

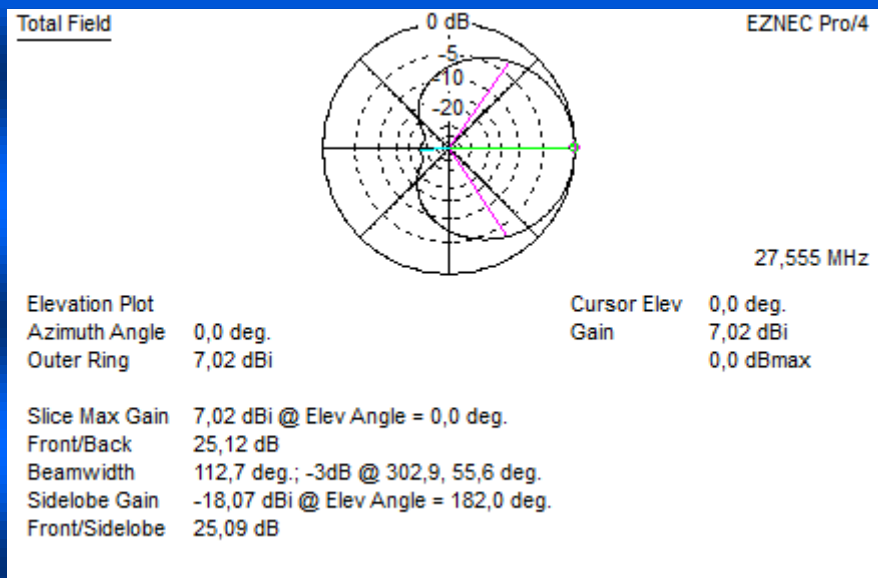
- *No matching loss,*
- *Very, very strong construction,*
- *Almost unlimited power handling capabilities.*
 - *Closed loop equals less P.static.*
- *7dBI from less than a meter boomlength AMAZING !*
 - *Etc etc.*

2e1 SUPER QUAD

Designed by: www.hpsd.nl 1.01 jan 2013



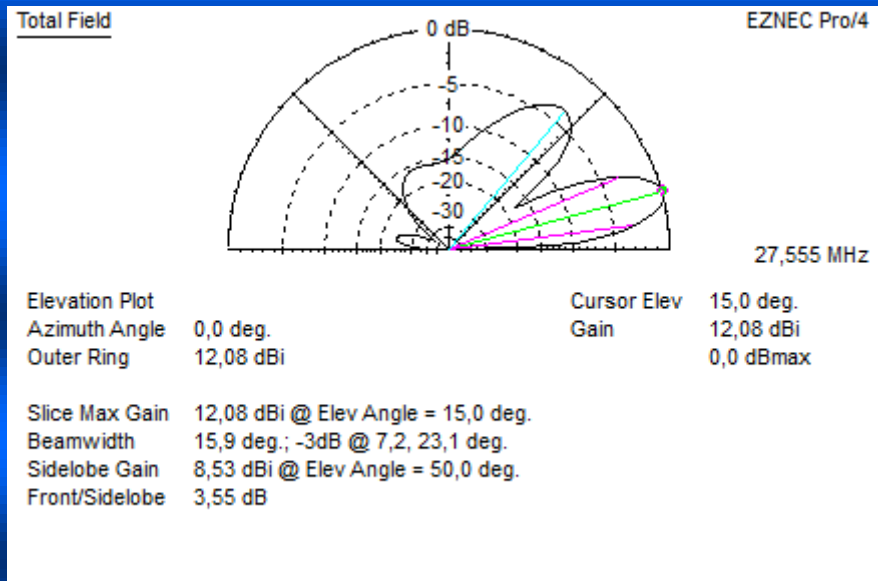
Above the freespace azimuth antenna pattern.
Over 7dBi and a front to back of 25 dB
THATS GREAT FROM ONLY 0,8 METER BOOMLENGTH !



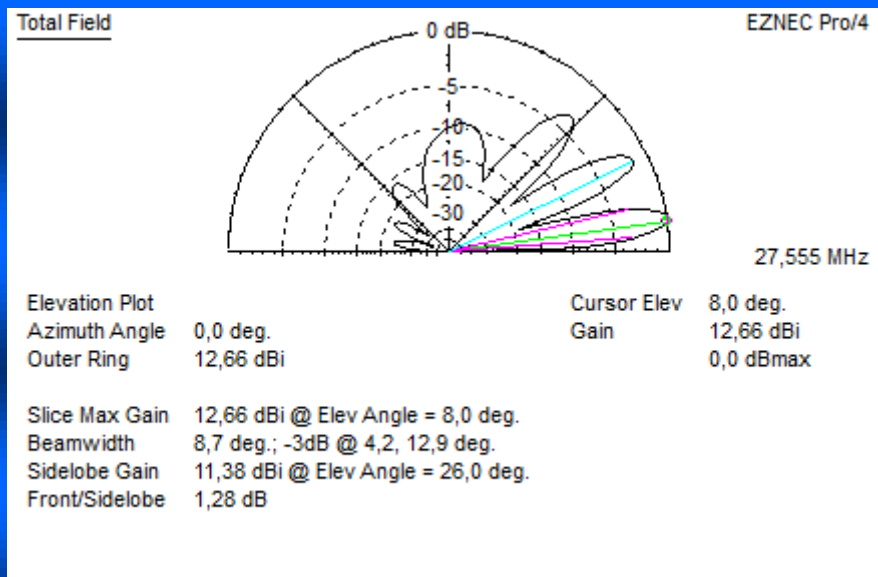
The freespace elevation plot at 27,555 Mhz

2e1 SUPER QUAD

Designed by: www.hpsd.nl 1.01 jan 2013



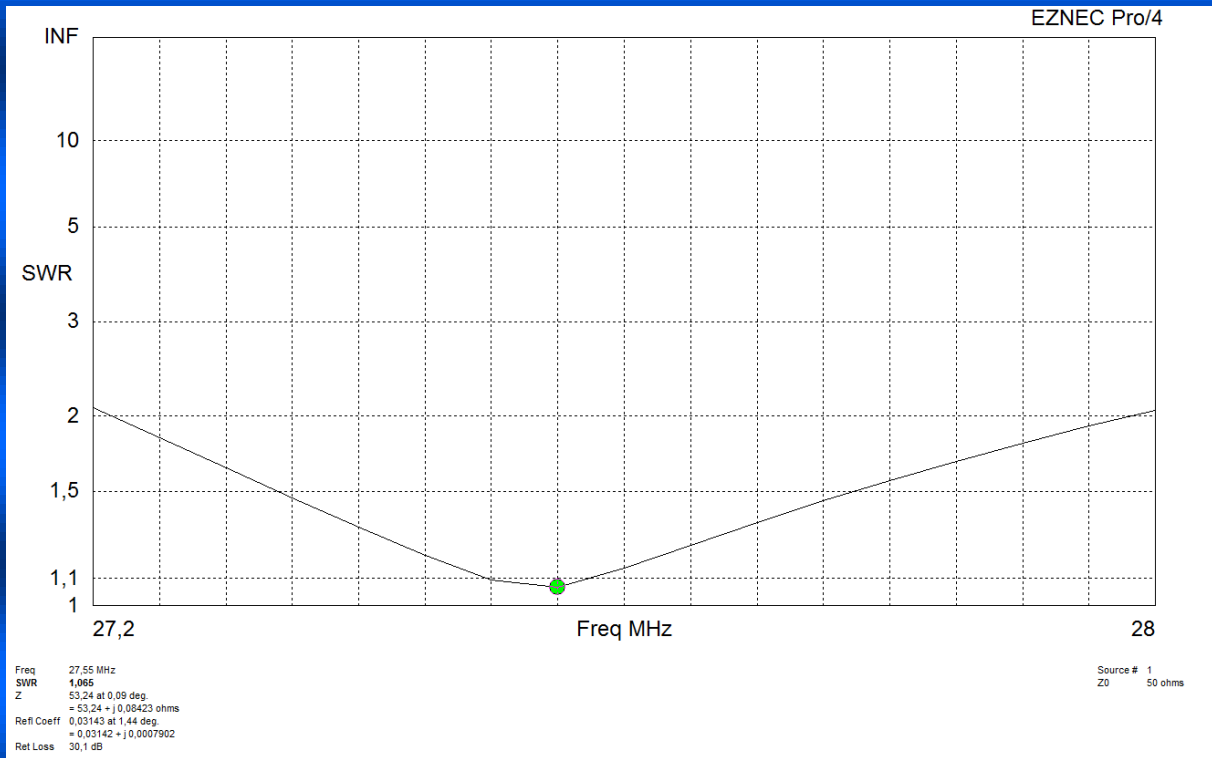
Above the elevation pattern if the antenna is placed 10 meters above average ground conditions.



Above the elevation pattern if the antenna is placed 18 meters above average ground conditions.

2e1 SUPER QUAD

Designed by: www.hpsd.nl 1.01 jan 2013



SWR plot...800 Khz 2.1 SWR bandwidth.

2e1 SUPER QUAD

Designed by: www.hpsd.nl 1.01 jan 2013

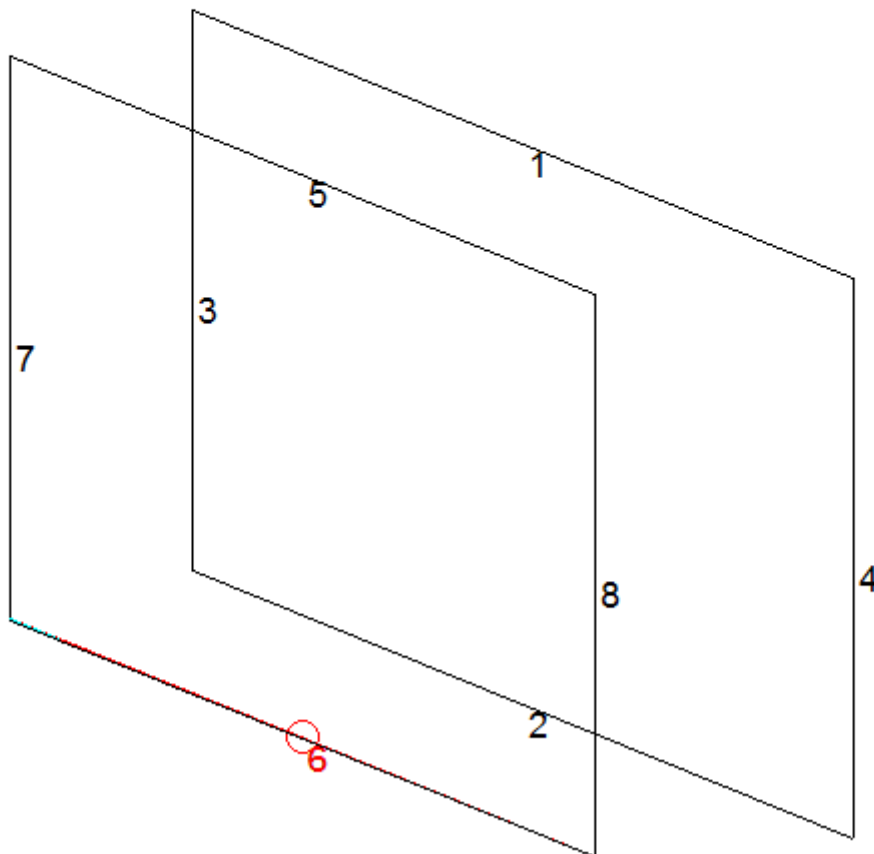
Radiator = 5,6,7,8
Reflector = 1,2,3,4

HPSD
2e1 SUPER QUAD
27,555 Mhz
version jan 2013

Distance Radiator reflector = 0,83 Meter

Length: wire 1,2 = 4,1 meter
Length wire 5,6 = 3,63 meter
length wire 3,4,7,8 = 1,84 meter.

Diameter 1,2,5,6 = 20 MM
Diameter 3,4,7,8 = 14 MM



Feeding the antenna:
The antenna is 50 ohms.

**THERE IS NO LOSS IN A MATCHING SYSTEM !
THE POWER THE ANTENNA CAN HANDLE IS RATED AT PLUS 10 KW.**

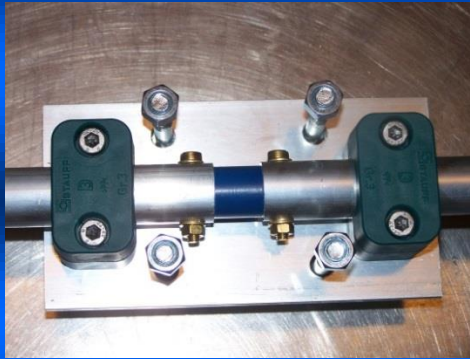
All elements need to be isolated from the boom. The radiator
Can be split in half and be “direct” fed.
With this said...a 1:1 balun or RF choke is advised.

**DO NOT CHANGE ELEMENT DIAMETER !, IF YOU NEED OTHER DIMENSIONS
PLEASE MAIL !**

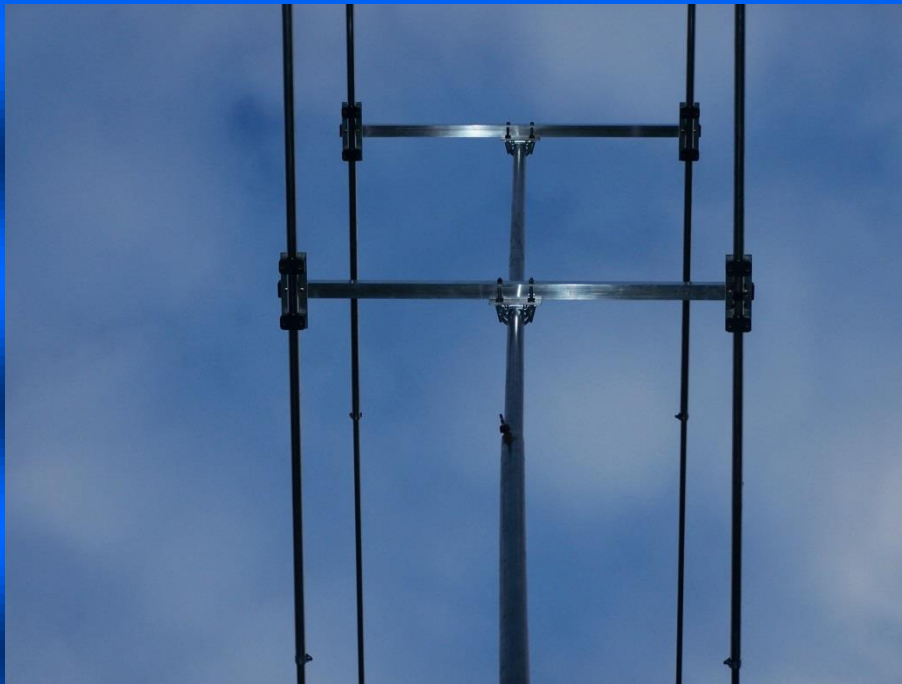
2e1 SUPER QUAD

Designed by: www.hpsd.nl 1.01 jan 2013

A couple hints



Possible example of element attachment.



2e1 SUPER QUAD

Designed by: www.hpsd.nl 1.01 jan 2013



If you need any further information, please feel free to ask.

Kind regards,
Henry HPSD, 19SD348